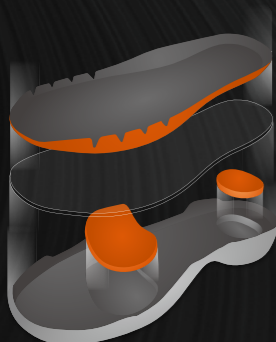


FOOTWEAR

The production of sports shoes often selects material based on the uniqueness or special purpose of the sporting event in order to design specialized shoes for different sports. Badminton athletes employ special footwork in that they are often required to break left, right, turn or stop abruptly. Therefore, badminton shoes must provide excellent support and shock-absorption in order to ensure the stability of the foot and reduce sudden impacts while landing. Due to the nimble and swift characteristics of badminton, the shoes must also emphasize being lightweight. Wearing appropriate professional badminton shoes while playing badminton will enhance performance and decrease the potential risk of sports injuries.



ENERGY SH-P9100 MAX



ENERGYMAX 3.0

The new generation of highly elasticity material, with a 22% increase in rebound ability. The shock absorbency increase by 6%, which can dramatically enhance the instant resilience, shock absorption and cushioning effect to shocks.



NEW

SH-P9100

D (Red / Black)/E (Yellow / Black)/FG (Blue / Fluorescent Green)

UPPER	PU Leather + V-Durable + Double Mesh
MIDSOLE	Light Resilient EVA + ENERGYMAX 3.0 + TPU + Carbon Power + Solid EVA
OUTSOLE	Rubber + D.MAX
SIZE	220 mm - 295 mm



SUPPORT



TRINETIC 2.0

The new revolutionized TRINETIC 2.0 triple-effect energy conversion system has an upgraded shock absorption. Through the recombination of newly developed materials, it has a 35% increase in shock absorption during high-impact when compared with the first generation to achieve excellent ability and comfortable wear.





www.victorsport.com

PROFESSIONAL



LEE YONG DAE
2014 Signature Edition



NEW
SH-LYD
Q (Rose Red) / G (Fluorescent Green)

UPPER	PU Leather + V-Durable + Double Mesh
MIDSOLE	Resilient EVA + ENERGYMAX3.0 + TPU + Carbon Power + Solid EVA
OUTSOLE	Rubber
SIZE	230 mm - 295 mm

SIZE CHART	EUR	35	36	37	37.5	38	39	39.5	40	40.5	41	42	43	44	44.5	45	45.5
	US	4	4.5	5	5.5	6	6.5	7	7.5	8	8.5	9	9.5	10	10.5	11	11.5
	US (woman)	5.5	6	6.5	7	7.5	8	8.5	9	9.5	10	-	-	-	-	-	-
	mm	220	225	230	235	240	245	250	255	260	265	270	275	280	285	290	295

ENERGY SH-P9100 MAX



ENERGYMAX3.0 Maximize Your ENERGY



TRINETIC 2.0



Light Resilient EVA



LS-S



CARBON POWER



www.victorsport.com

PROFESSIONAL



E



J



SH8500

E (Yellow + Black) / J (Purple + White)

UPPER MFP Leather + V-Durable + Double Mesh

MIDSOLE Resilient EVA + ENERGYMAX + TPU + Carbon Power + Solid EVA

OUTSOLE Rubber

SIZE 230 mm - 295 mm



AO



F



SH-P7500

AO (White + Orange) / F (Blue + Black)

UPPER PU Leather + V-Durable + Double Mesh

MIDSOLE Resilient EVA + ENERGYMAX + TPU + Carbon Power + Solid EVA

OUTSOLE Rubber

SIZE 220 mm - 295 mm

SIZE CHART	EUR	35	36	37	37.5	38	39	39.5	40	40.5	41	42	43	44	44.5	45	45.5
	US	4	4.5	5	5.5	6	6.5	7	7.5	8	8.5	9	9.5	10	10.5	11	11.5
	US (woman)	5.5	6	6.5	7	7.5	8	8.5	9	9.5	10	-	-	-	-	-	-
	mm	220	225	230	235	240	245	250	255	260	265	270	275	280	285	290	295

PROFESSIONAL
ALL-AROUND



O



F



G



SH-A850
O (Orange + Dark Grey) / F (Blue + Silver) / G (Fluorescent Green + Silver)

UPPER	PU Leather + V-Durable + Mesh
MIDSOLE	Resilient EVA + ENERGYMAX + TPU + Carbon Power + Solid EVA
OUTSOLE	Rubber
SIZE	220 mm - 295 mm



W



SH980
W (White + Copper)

UPPER	PU Leather + V-Durable + Mesh
MIDSOLE	Resilient EVA + ENERGYMAX + TPU + Carbon Power + Solid EVA
OUTSOLE	Rubber
SIZE	220 mm - 295 mm



AI



SH980L Ladies
AI (White + Pink)

UPPER	PU Leather + V-Durable + Mesh
MIDSOLE	Resilient EVA + ENERGYMAX + TPU + Carbon Power + Solid EVA
OUTSOLE	Rubber
SIZE	220 mm - 260 mm

SIZE CHART	EUR	35	36	37	37.5	38	39	39.5	40	40.5	41	42	43	44	44.5	45	45.5
	US	4	4.5	5	5.5	6	6.5	7	7.5	8	8.5	9	9.5	10	10.5	11	11.5
	US (woman)	5.5	6	6.5	7	7.5	8	8.5	9	9.5	10	-	-	-	-	-	-
	mm	220	225	230	235	240	245	250	255	260	265	270	275	280	285	290	295



戴資穎
Tai Tzu Ying

PROFESSIONAL



AD



G



NEW	SH-A610
AD (White + Red) / G (Green)	
UPPER	PU Leather + Double Mesh
MIDSOLE	Resilient EVA + ENERGYMAX 3.0 +Solid EVA + Nylon Sheet
OUTSOLE	Rubber
SIZE	220 mm - 295 mm



AQ

NEW	SH-A610L Ladies
AQ (White + Pink)	
UPPER	PU Leather + Double Mesh
MIDSOLE	Resilient EVA + ENERGYMAX 3.0 +Solid EVA + Nylon Sheet
OUTSOLE	Rubber
SIZE	220 mm - 265 mm



A



J



NEW	SH-A300
A (White + Red) / J (Purple)	
UPPER	PU Leather + Double Mesh
MIDSOLE	Resilient EVA + ENERGYMAX + Solid EVA + Nylon Sheet
OUTSOLE	Rubber
SIZE	220 mm -295 mm



D



F



SH-A100

D (White + Red) / F (White + Blue)

UPPER	PU Leather + Mesh
MIDSOLE	Resilient EVA + ENERGYMAX + Nylon Sheet
OUTSOLE	Rubber
SIZE	220 mm -295 mm



D



F



E



SHW503

D (White + Red) / F (White + Blue) / E (Yellow + Black)

UPPER	PU Leather + Mesh
MIDSOLE	EVA + ENERGYMAX + Nylon Sheet
OUTSOLE	Rubber
SIZE	220 mm -295 mm

SIZE CHART	EUR	35	36	37	37.5	38	39	39.5	40	40.5	41	42	43	44	44.5	45	45.5
	US	4	4.5	5	5.5	6	6.5	7	7.5	8	8.5	9	9.5	10	10.5	11	11.5
	US (woman)	5.5	6	6.5	7	7.5	8	8.5	9	9.5	10	-	-	-	-	-	-
	mm	220	225	230	235	240	245	250	255	260	265	270	275	280	285	290	295

PROFESSIONAL



SH910
F (Blue + White) / SG (Silver + Fluorescent Green)
UPPER PU Leather + Double Mesh
MIDSOLE Resilient EVA + ENERGYMAX + Nylon Sheet + TPU
OUTSOLE Rubber
SIZE 220 mm - 295 mm

JUNIOR



NEW
SHC02
E (Yellow) / AO (White + Orange)
UPPER PU Leather + Mesh
MIDSOLE Resilient EVA + ENERGYMAX + Nylon Sheet
OUTSOLE Rubber
SIZE 190 mm, 200 mm, 205 mm, 210 mm, 220mm



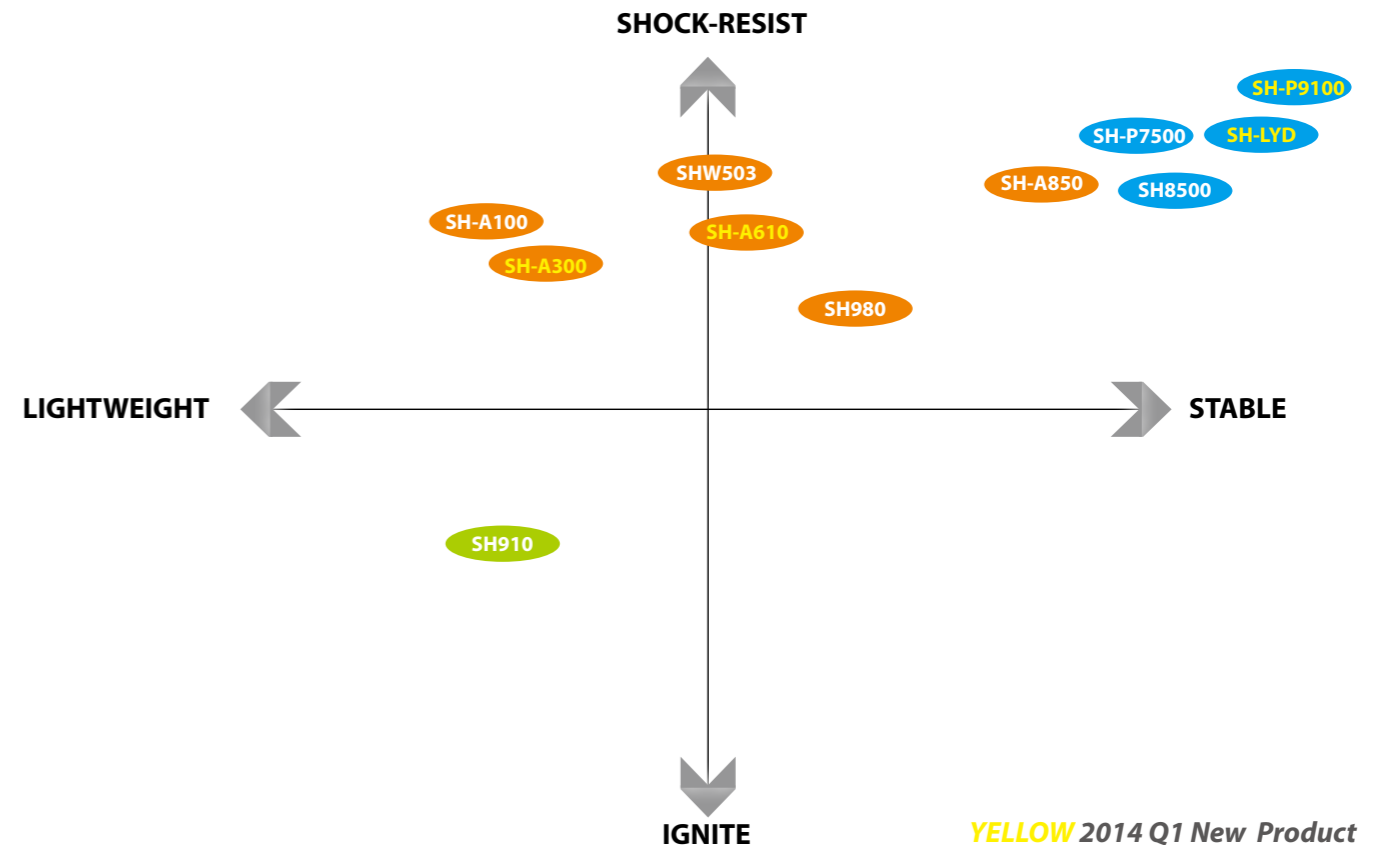
SHC03
C (Black + Yellow) / F (Blue / Green) / A (White)
UPPER PU Leather + Mesh
MIDSOLE Resilient EVA + ENERGYMAX + Nylon Sheet
OUTSOLE Rubber
SIZE 190 mm, 200 mm, 205 mm, 210 mm, 220 mm, 225 mm, 230 mm

SIZE CHART	EUR	35	36	37	37.5	38	39	39.5	40	40.5	41	42	43	44	44.5	45	45.5
	US	4	4.5	5	5.5	6	6.5	7	7.5	8	8.5	9	9.5	10	10.5	11	11.5
	US (woman)	5.5	6	6.5	7	7.5	8	8.5	9	9.5	10	-	-	-	-	-	-
	mm	220	225	230	235	240	245	250	255	260	265	270	275	280	285	290	295

VICTOR 3 TYPE OF FOOTWEAR

VICTOR present 3 types of footwear classification: 【ALL-AROUND】、【SUPPORT】and 【SPEED】 combining four indicators: SHOCK-RESIST、STABLE、IGNITE and LIGHTWEIGHT, allowing you to choose the specialized badminton shoes that are most suitable to your badminton footwork.

FOOTWEAR MAPPING



VICTOR uses high level material to make footwear that reduce the impact on the foot and increase the stability of footwear body foot encapsulation, allowing for faster speed of movement and the next step to be quickly taken.



Lateral and whole sole of foot stability systems reduce the inward turn of your feet when you move, lowering the chance of injury.



Badminton is a sport that requires speed and agility, the SPEED type of badminton footwear includes two characteristics: LIGHTWEIGHT and IGNITE.

FOOTWEAR TECHNOLOGY

STABLE

TalonGuard

TalonGuard is a lateral stability technology which combines two levels of TPU. Like an eagle's claw, it is placed at the lateral forefoot to provide stability and also prevents pronation during lateral movement.



The outside of forefoot is designed using high-strength TPU. This significantly enhances the lateral stability during intense and rapid transfer of direction when playing badminton.



The three-dimensional carbon fiber sheet provides mid-sole stability and decreases the torsional strain on the foot's arch.



SHOCK ABSORPTION AND BOUND

ENERGYMAX3.0

The new generation of highly elasticity material, with a 22% increase in rebound ability. The shock absorbency increase by 6%, which can dramatically enhance the instant resilience, shock absorption and cushioning effect to shocks.

ENERGYMAX+

The double layer pad combined with ENERGYMAX shock absorption and ENERGYMAX bound insole, can reduce impact of landing and increase rebound.

ENERGYMAX Y

A High elasticity ENERGYMAX insole insert is placed at the forefoot to increase the rebound and cushion at the point of impact.

ENERGYMAX >

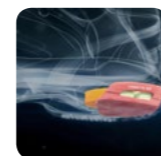
ENERGYMAX reduces the impact of landing and aids in moving in the next movement. This effectively reduces the loss of momentum.

TRINETIC 2.0

The new revolutionized TRINETIC 2.0 triple-effect energy conversion system has an upgraded shock absorption. Through the recombination of newly developed materials, it has a 35% increase in shock absorption during high-impact when compared with the first generation to achieve excellent ability and comfortable wear.



A new, completely upgraded lightweight, highly resilient, and durable midsole, which has a 16% increase in durability when compared to the original high resilient EVA. It improves the life-span of shoes, reduced 19% of weight, flexibility increased by 5%, and lowered muscle burden in intensive exercises, which allows one to take agile paces quickly.



SHOCK ABSORPTION AND BOUND



LIGHTWEIGHT MIDSOLE

The ultralight material used for mid-sole is much lighter than ordinary EVA. Lightweight, strong and resistant to deformation, this material is capable of absorbing part of external impacts and providing excellent cushion.

Resilient EVA

Highly resilient midsole material is more durable and retains its shape better. It not only provides the basic stability and shock absorption but also increases flexibility and increases the reaction time while changing directions.



EMBRACE



VENTI-WRAP

A sock-like tongue design accompanied with the three dimensional mesh fabric wrap around the foot providing a more responsive and comfortable feel.

BRACE TEK

BRACE TEK technology provides more comfort and safety feeling to the foot, which gives more stability throughout the entire shoe.



DURABILITY



This is a special ultra-abrasion resistance soft rubber that provide excellent grip, slip resistance and wear resistance.

V-Durable

A thin film is applied over the soft and high-density PU leather to provide better strength and durability.



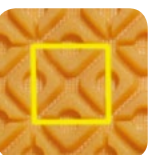
OTHERS

V-BRAKE






The V-shaped square design allows a light-weight and minimized landing area, while providing the anti-slip for vertical and lateral movement. This gives you more responsive and agile footwork while providing additional durability.

RADIATION

Coping with the asterisk steps, the center is the rounded-shape design surrounded by triangular shapes. The radiation pattern provides more grip on the court during lateral and vertical movements. The small lump pattern distribution adds additional grip as the sensor and increases the grip.



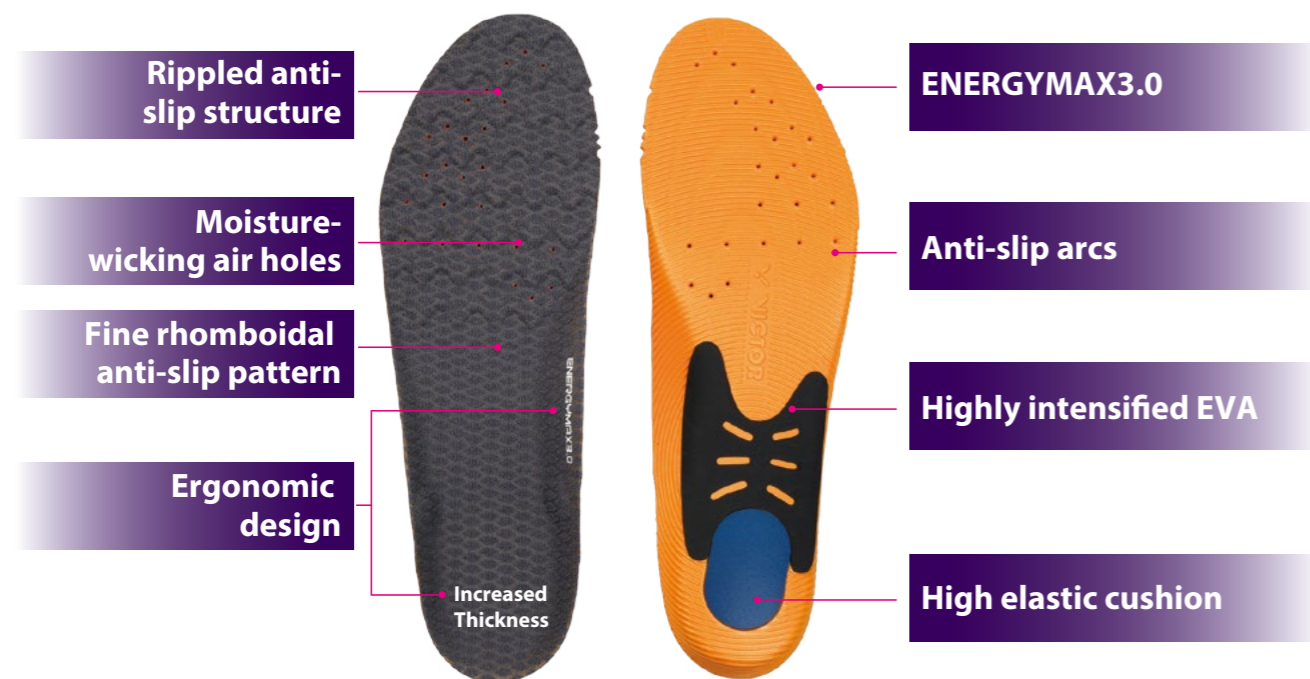
FOOTWEAR SPEC CHART

															
MODEL	SH-P9100	SH-LYD	SH8500	SH-P7500	SH-A850	SH980	SH980L	SH-A610	SH-A610L	SH-A300	SH-A100	SHW503	SH910	SHC02	SHC03
COLOR	D (Red / Black)/ E (Yellow / Black)/ FG (Blue / Fluorescent Green)	Q (Rose Red)/ G (Fluorescent Green)	J (Purple / White)/ E (Yellow / Black)	AO (White / Orange)/ F (Blue / Black)	O (Orange / Dark Grey)/ G (Fluorescent Green / Silver)/ F (Blue / Silver)	W (White / Copper)	AI (White / Pink)	AD (White / Red)/ G (Green)/	AQ (White / Pink)	A (White / Red)/ J (Purple)	D (White / Red)/ F (White / Blue)	D (White / Red)/ F (White / Blue)/ E (Yellow / Black)	F (Blue / White)/ SG (Silver / Fluores- cent Green)	E (Yellow)/ AO (White / Orange)	C (Black / Yellow)/ F (Blue / Green)/ A (White)
UPPER	PU Leather + V-Durable + Double Mesh	PU Leather + V-Durable + Double Mesh	MFP Leather + V-Durable + Double Mesh	PU Leather + V-Durable + Double Mesh	PU Leather + V-Dura- ble + Mesh	PU Leather + V-Durable + Mesh	PU Leather + V-Durable + Mesh	PU Leather + Double Mesh	PU Leather + Double Mesh	PU Leather + Double Mesh	PU Leather + Mesh	PU Leather + Mesh	PU Leather + Double Mesh	PU Leather + Mesh	PU Leather + Mesh
MIDSOLE	Light Resilient EVA + ENERGYMAX 3.0 + TPU + Carbon Power + Solid EVA	Resilient EVA + ENERGYMAX3.0 + TPU + Carbon Power + Solid EVA	Resilient EVA + ENERGYMAX + TPU + Carbon Power + Solid EVA	Resilient EVA + ENERGYMAX + TPU + Carbon Power + Solid EVA	Resilient EVA + ENERGYMAX + TPU + Carbon Power + Solid EVA	Resilient EVA + ENERGYMAX + TPU + Carbon Power + Solid EVA	Resilient EVA + ENERGYMAX + TPU + Carbon Power + Solid EVA	Resilient EVA + ENERGYMAX 3.0 +Solid EVA + Nylon Sheet	Resilient EVA + ENERGYMAX 3.0 +Solid EVA + Nylon Sheet	Resilient EVA + ENERGYMAX + Solid EVA + Nylon Sheet	Resilient EVA + ENERGYMAX + Nylon Sheet	EVA + ENERGYMAX + Nylon Sheet	Resilient EVA + ENERGYMAX + Nylon Sheet + TPU	Resilient EVA + ENERGYMAX + Nylon Sheet	Resilient EVA + ENERGYMAX + Nylon Sheet
OUTSOLE	Rubber + D.MAX	Rubber	Rubber	Rubber	Rubber	Rubber	Rubber	Rubber	Rubber	Rubber	Rubber	Rubber	Rubber	Rubber	Rubber
(mm) Size Range	220 mm - 295 mm	230 mm - 295 mm	230 mm - 295 mm	220 mm - 295 mm	220 mm - 295 mm	220 mm - 295 mm	220 mm - 260 mm	220 mm - 295 mm	220 mm - 265 mm	220 mm -295 mm	220 mm -295 mm	220 mm -295 mm	220 mm - 295 mm	190 mm, 200 mm, 205 mm, 210 mm, 220mm	190 mm, 200 mm, 205 mm, 210 mm, 220 mm, 225 mm, 230 mm
Ladies							●		●						
Junior														●	●
TalonGuard		●	●												
LS-S	●			●	●	●	●								
CARBON POWER	●	●	●	●	●	●	●								
ENERGYMAX3.0	●	●						●	●						
ENERGYMAX+					●										
ENERGYMAX REBOUND			●	●	●	●	●			●	●	●	●		
ENERGYMAX SHOCK ABSORP- TION			●	●	●	●	●			●	●	●	●	●	●
TRINETIC2.0	●														
Light Resilient EVA	●														
Resilient EVA		●	●	●	●	●	●	●	●	●	●		●	●	●
VENTI-WRAP			●		●	●	●								
BRACE TEK	●	●		●	●	●	●	●	●		●	●		●	●
D-MAX	●														
V-Durable	●	●	●	●	●	●	●								
RADIATION	●	●	●	●	●	●	●	●	●	●	●	●		●	●
WIDE last												●			

SPORT SHOE SOLE

Highly Resilient Sport Insoles

VICTOR multi-functional High Resilient Sporting Insoles feature the latest ENERGYMAX3.0 resilience enhancing technology, inserted with high elastic cushion for optimal foot fit and comfort. Additional rippled design and rhomboidal pattern for exceptional anti-slip effect.



- Comfort upgrade :
ENERGYMAX 3.0 resilience enhancing technology features increased resilience up to 62% compared to conventional EVA materials, offering absolute efficiency and comfort. The inserted high elastic cushion are highly durable and provides perfect cushioning at impacts.
- Stability upgrade :
Ergonomic design gives the ultimate foot arch and heel support, strengthening protection for intense movements. The highly intensified EVA under foot arch provides extra stability.
- Anti-slip upgrade :
Rippled anti-slip structure is designed at the front-foot in computer-calculated spaces according to human foot arch to make the best grip during extreme movements, while the anti-slip arcs on the back enhances both its flexibility and the anti-slip effect.

NEW VT-XD8

Highly Resilient Sport Insoles

MATERIAL	ENERGYMAX 3.0 + PORON
SIZE	XS (220 - 230 mm) S (235 - 245 mm) M (250 - 260 mm) L (265 - 275 mm) XL (280 - 290 mm) XXL (295 - 305 mm)

SPORT SOCKS

Men



SK125 K/C

Sport Socks for Men

COLOR	Dark Grey / Black
SIZE	25-28cm
MATERIAL	53% Cotton + 16% Absorbing Yarn + 14% Polyester + 4.5% Spandex + 4.5% Coolmax Yarn + 2.5% Nylon + 5.5% Bamboo Charcoal Fiber

SK127 C/D/F

Sport Socks for Men

COLOR	Black / Red / Blue
SIZE	25-28cm
MATERIAL	79% Cotton Combined + 17% Polyester + 4% Spandex
REMARK	2 pairs/pack

SK112 K/F/D

Sport Socks for Men

COLOR	Dark Grey / Blue / Red
SIZE	25-28cm
MATERIAL	53% Cotton + 23% Absorbing Yarn + 19% Polyester + 3% Rubber + 2% Spandex

SK129 M/P/E/J/O

Sport Socks for Men

COLOR	Light Blue / Apple Green / Yellow / Purple / Orange
SIZE	25-28cm
MATERIAL	76% Cotton + 19% Polyester + 5% Spandex

SPORT SOCKS

Men



SK190 A/C

Sport Socks for Men

COLOR	White / Black
SIZE	25-28 cm
MATERIAL	57% Cotton + 25% Acrylic Fiber + 15% Nylon + 3% Spandex



NEW

SK130 F/D/E

Sport Socks for Men

COLOR	Blue / Red / Yellow
SIZE	25-28 cm
MATERIAL	76% Cotton + 19% Nylon + 3% Rubber + 2% Spandex



NEW

SK131 D/F

Sport Socks for Men

COLOR	Red / Blue
SIZE	25-28 cm
MATERIAL	76% Cotton + 19% Nylon + 3% Rubber + 2% Spandex



NEW

SK132 O/F/H

Sport Socks for Men

COLOR	Orange / Blue / Light Grey
SIZE	25-28 cm
MATERIAL	76% Cotton + 19% Nylon + 3% Rubber + 2% Spandex

Women



SK290 A/C

Sport Socks for Women

COLOR	White / Black
SIZE	22-25 cm
MATERIAL	57% Cotton + 25% Acrylic Fiber + 15% Nylon + 3% Spandex



SK225 I/D

Sport Socks for Women

COLOR	Pink / Red
SIZE	22-25 cm
MATERIAL	53% Cotton + 16% Absorbing Yarn + 14% Polyester + 4.5% Spandex + 4.5% Coolmax Yarn + 2.5% Nylon + 5.5% Bamboo Charcoal Fiber



SK227 J/Q/C

Sport Socks for Women

COLOR	Purple / Rose Red / Black
SIZE	22-25 cm
MATERIAL	76% Cotton Combined + 19% Polyester + 5% Spandex



SK228 I/R/Q

Sport Socks for Women

COLOR	Pink / Pastel Green / Rose Red
SIZE	22-25 cm
MATERIAL	79% Cotton Combined + 17% Polyester + 4% Spandex
REMARK	2 pairs / pack

SPORT SOCKS

Women



NEW

SK230 Q/O/J

Sport Socks for Women

COLOR	Rose Red / Orange / Purple
SIZE	22-25 cm
MATERIAL	76% Cotton + 19% Nylon + 3% Rubber + 2% Spandex



NEW

SK231 M/Q

Sport Socks for Women

COLOR	Light Blue / Rose Red
SIZE	22-25 cm
MATERIAL	76% Cotton + 19% Nylon + 3% Rubber + 2% Spandex



NEW

SK232 Q/E/M

Sport Socks for Women

COLOR	Rose Red / Yellow / Light Blue
SIZE	22-25 cm
MATERIAL	76% Cotton + 19% Nylon + 3% Rubber + 2% Spandex



SK229 M/P/E/J/O

Sport Socks for Women

COLOR	Light Blue / Apple Green / Yellow / Purple / Orange
SIZE	22-25 cm
MATERIAL	76% Cotton + 19% Polyester + 5% Spandex

Junior



SK020 F/G/Q

Sport Socks for Junior

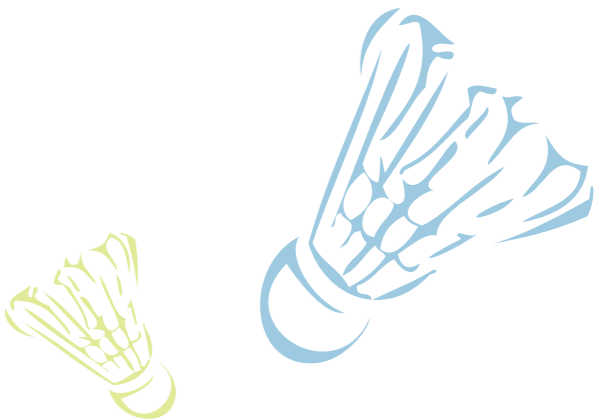
COLOR	Blue / Green / Rose Red
SIZE	16-20 cm
MATERIAL	76% 32S Cotton Combed + 19% Polyester + 3% Rubber + 2% Spandex



SK021 E/F/Q

Sport Socks for Junior

COLOR	Yellow / Blue / Rose Red
SIZE	18-22 cm
MATERIAL	76% 32S Cotton Combed + 19% Polyester + 3% Rubber + 2% Spandex



VICTOR STAR

Tontowi Ahmad
Date of birth:7/18/1987
Mixed doubles

2013 BWF World Championships	1st
2013 All England Open Badminton Championships	1st
2013 Singapore Open	1st
2013 Sunrise India Open	1st



Tontowi
Ahmad

- Q : How did you started to play badminton?

A : My dad is also a badminton player, and he really loves it. He introduced badminton to me, and he's sort of my first coach. But to be honest, I didn't like badminton in the beginning. And he kept pushing me, which is stressful. I didn't enjoy this sport until I started to win.
- Q : Are you better than your father now?

A : Of course I am, and I'm definitely much better than him.
- Q : What type of racket are you using now?

A : Brave Sword 12. I'm still getting used to it, but, in summary, it's a pretty good racket.
- Q : Why do you choose Brave Sword 12? Is there any feature that's suitable for your style?

A : I choose this racket because I can play without difficulty with it, just a matter of feeling.
- Q : Do you have any special needs with regard to badminton shoes? Do you prefer shoes with softer sole, or better anti-slip function?

A : Actually that doesn't mean much to me. Comfort is what I want.
- Q : Do you play other sport except for badminton?

A : Yes, I do. I love playing billiards, and that's my hobby. And I'm pretty good at it.
- Q : Can you use a word or a sentence to describe your relationship with Liliyana?

A : She's my senior, and I'm the junior with regard to badminton. She's an icon. I was extremely excited when I knew that I can play with her.
- Q : If she's an icon, are you nervous when playing with her?

A : Not really. I don't get nervous easily. What's more, what you need to do in doubles is to do your best. Whoever becomes my partner, I won't get nervous about that.
- Q : All England Open Badminton Championships is one of the world's oldest badminton tournaments, hence it's also called small World Championships. what did you fell, when you win the Championships?

A : I felt like I won the World Championships. But when I won for the second time, the feeling faded away. And I know I have to move forward. So I hope I can truly win the World Championships instead of being satisfied with the golden medal of All England Open.
- Q : You have to travel around the world for the games. Is jet lag troubling you, or is there other thing that bothers you?

A : Jet lag is what I have to deal with and get used to. This is my job, so I have to overcome all the troubles I have.
- Q : What do you usually do before the game?

A : I would call my girlfriend and tell her I love her and I will win for her. She is not only my lucky item but also my encouragement.
- Q : Which's your favorite country you've been traveled around?

A : My favorite country is U.K. because I've already taken two championships in All England Open Badminton Championships. I hope there will be the third championship.